



DECEMBER Weekly Update

December 11, 2024

Christmas Eve is less than two weeks away! As we continue to prepare ourselves during the season of advent, we have a great opportunity to think about how to be invitational at Christmastime this year.

Just last week a study was released by Lifeway Research which reported that the majority of those surveyed (56%) say they would likely attend church at Christmas if someone they know invited them! This includes 17% of people who say it is **very likely** they would attend church with someone after a personal invitation. (see chart below)

We also know that Christmas Eve tends to be the highest attendance day of the year for most protestant churches (see second chart below).

All of this provides a helpful picture of the opportunity we have to reach out to our relatives, neighbors, coworkers and friends and invite them to join us for Christmas. It seems to be that this time of year makes people receptive to the encouragement to attend church for worship.

For the next two Sundays in the morning bulletin we will be including a small flyer with details about our Christmas Eve service. This flyer/postcard will provide you with an easy informational piece about Christmas Eve at FPC to share with others. Now, your job is to invite someone! It could be that there are people in your life who would be likely to join you for worship, but they are just waiting to be asked. My encouragement to you is to be brave and ask – you never know what might happen!

And remember: we don't invite people to worship with us because we just want more bodies in the room on Christmas Eve – we invite people to worship because we believe we have the best news to share: Jesus Christ has come to us!

Among U.S. adults who typically do not attend church at Christmastime

How likely are you to attend if someone you know invited you to attend church with them at Christmastime?

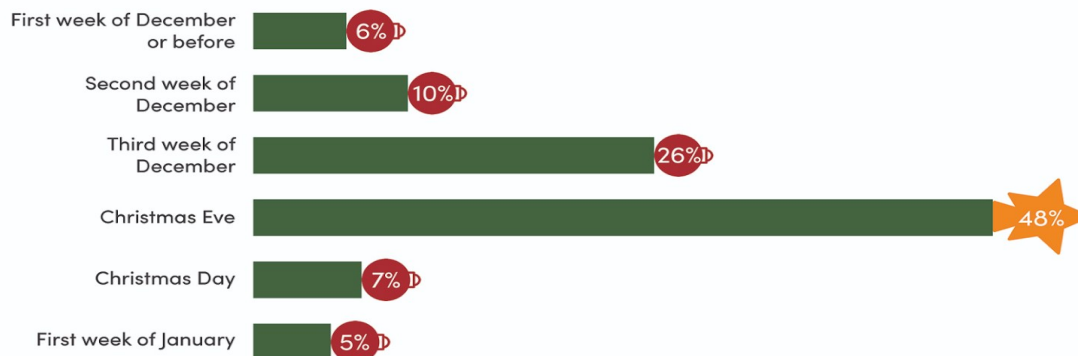


Our attendance figures don't matter at all. What DOES matter is proclaiming the good news of Jesus to our community – and that is something we ALL can participate in! It may be as easy as a personal invitation to a Christmas Eve service!

Who might YOU invite to join us this Christmas?

Christmas Eve has the highest attendance for more churches during the holiday season

Among U.S. Protestant pastors



VOLUNTEERS FOR DECEMBER 15

Greeters	Jim & Candi Kinney
Ushers	Shad Swinehart & Cody Daugherty
Café	Jenny Reed
Nursery (Worship)	Shyler Swinehart
Nursery (2nd Hour)	Wendy McKelvey
Kidz Jam	Delores Schlegel
Kids 2nd Hour	Georgie Miller
Elder Assist	Angie Chapman
Safety Team	Shirley Swinehart

December/January Calendar

December 15	Sunday morning worship and 2nd Hour
December 17	6 - 8 p.m. Village Cookie Walk
December 18	10 a.m. G.L.O.W. (women)
December 18	6:45 p.m. Music Team
December 19	7:00 p.m. Session Meeting
December 22	Sunday morning worship and 2nd Hour
December 24	8:00 p.m. Christmas Eve Service
December 25	<i>Merry Christmas</i> 
December 29	Sunday morning worship
January 1	<i>happy new year</i> 
January 5	Sunday morning worship NO 2nd Hour
January 5	Carry-in dinner following worship
January 8	10: a.m. G.L.O.W. (Women)
January 8	6:45 p.m. Music Team

PRAYER

Please keep these people/situations in your prayers.

The prayer needs listed in **BOLD** are new to the list.

Military Service:

- Shannah Swinehart - Army National Guard
- Christa Nelson - Navy
- Rusty King - Army
- Ryan Chabak - stationed in Arizona
- Isaiah Styer - stationed at Camp Lejeune in NC
- Gaven Bee - stationed in Dayton, OH

Health Concerns:

- **Caleb Michaels - pneumonia**
- **Caydin Burns - pneumonia**
- **Jenny Miller's Uncle Joe treatments going well. Prayers for regaining strength**
- Roger Stroud continued healing
- Tanya Chupp - continued healing
- Julie - health concerns
- Pastor Albert continued healing from accident
- Wendy Scott - health concerns
- Jane Heilman

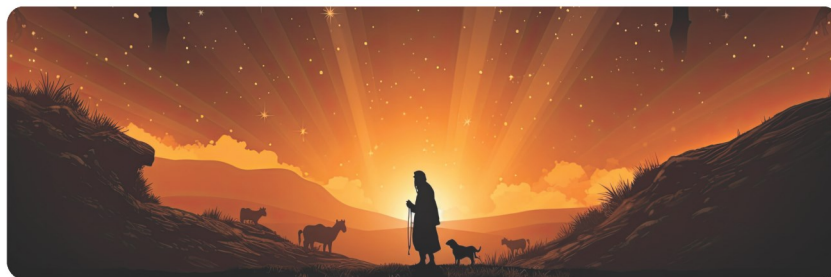
Battling Cancer

- Susan Halliday - battling cancer
- Janet Lee - lung cancer diagnosis
- Mary Hardesty - entering hospice
- Waldo - cont'd prayers for remainder of chemo
- Landon Sommers - Hodgkin's Lymphoma
- David
- Keylee - leukemia
- Dale James

Condolences

- The family of Judy Pinnick

Join us for worship during this Advent Season...



Welcomed from Afar

December 1st: The Messiah who is a Human (Genesis 3:8-15)

December 8th: The Messiah who is a King (2 Samuel 7:8-16)

December 15th: The Messiah who will Suffer (Isaiah 53)

December 22nd: The Messiah who is God (Ezekiel 34:11-16)

December 24th: The Messiah who is Jesus (Luke 1:26-38; 2:19)

Worship with us at our...

Christmas Eve Service

Tuesday, December 24th | 8:00PM

“For unto us a child is born...” - Isaiah 9:6



201 N. Mill Street
Fredericksburg, OH 44627

FROM THE FINANCE TEAM

YTD Operating Income	\$203,970.56
YTD Operating Expense	\$208,084.86
YTD Operating Gain/ Loss	-\$4,114.30
YTD Other Income	\$36,401.36
YTD Net Income	\$32,287.06
Unrestricted Funds	\$206,896.76

SAVE THE DATE - On Sunday, January 5 we will be ordaining and installing of 2025 church officers and we will be having a pot-luck dinner. More details to come.



Marcy Speelman

Favorites

FOOD: Coccia House pizza, cheesecake
COLOR: Blue
BIBLE CHARACTER: Ruth/Mary (Mother of Jesus)
SPORTS TEAM TO FOLLOW: Ohio State Buckeyes (Football)

Hobbies

Taking care of our home & family, spending time with our grandchildren

Free Day Fun

Day trip with Butch in our convertible

Overseas Vacay

European country (Greece, Italy, Ireland, etc.)

Something Interesting

My faith has become deeper and stronger since attending G.L.O.W.!

Quick Hits

Mountains or Beach
Chocolate or Vanilla

Baseball or Football
Mexican Food or Chinese Food
Late Nights or Early Mornings